



Bird Cherry Lane | Harlow | CM17 0FR

Asking Price £450,000



Bird Cherry Lane | Gilden Park  
Harlow | CM17 0FR  
Asking Price £450,000

A WELL PRESENTED FOUR BEDROOM LINKED DETACHED HOUSE benefitting from carport parking. The ground floor comprises of a spacious entrance hall, modern fitted kitchen with a range of wall and base units featuring ample dining space, large lounge with direct access onto the rear Garden and cloakroom. The first floor boasts three generously sized double bedrooms, with the master bedroom offering en-suite shower room. Further features include a single bedroom and a family bathroom suite. The rear Garden is low maintenance with patio and artificial turf and plenty of entertaining space. Viewings highly recommended.

- Four Bedrooms
- Two Allocated Parking Spaces
- EPC Rating: B
- Linked Detached House
- Well Presented Throughout
- Council Tax Band: E

Front  
Two allocated parking spaces (carport). Ample visitors parking to front and walking distance from newly built park.





#### Entrance Hall

Spacious entrance hall with radiator to wall and stairs to first floor. Internal door to Kitchen/Diner and cloakroom.

#### Kitchen/Diner

Impressive modern fitted kitchen with a range of wall and base units benefitting from integrated oven and hob with extractor fan above, plumbing for washing machine and dishwasher. Further benefits include space for fridge freezer, boiler to wall and ample dining space.

UPVC double glazed window with shutter blinds.

#### Cloakroom

White toilet and sink. Radiator to wall. UPVC double glazed window.

#### Lounge

Large lounge offering ample living space with UPVC double glazed window and double doors leading to rear garden with shutter blinds. Radiator to wall.

#### Landing

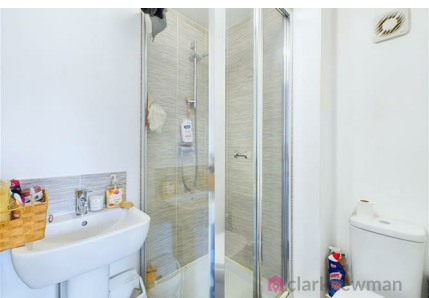
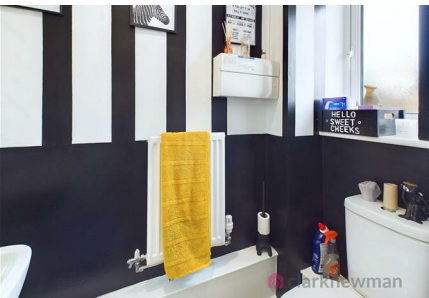
Spacious landing with loft hatch and internal doors to bedrooms and family bathroom. Airing cupboard.

#### Bedroom One

Large double bedroom with UPVC double glazed window with shutter blinds, radiator to wall and ample space for wardrobes. Internal door to en-suite shower room.

#### En-Suite Shower Room

Fully tiled en-suite featuring large shower with thermostatic control, white toilet and sink and radiator to wall. Extractor fan.





### Bedroom Two

Generously sized second bedroom with three UPVC double glazed windows with shutter blinds offering plenty of natural light, radiator to wall and ample space for wardrobes.

### Bedroom Three

Double bedroom to front with UPVC double glazed window to front with shutter blinds and radiator to wall.

### Bedroom Four

Single bedroom currently being used as an office with UPVC double glazed with shutter blinds and radiator to wall.

### Bathroom

Family bathroom suite offering bath with shower, white toilet and sink. Radiator to wall, UPVC double glazed window and extractor fan.

### Garden

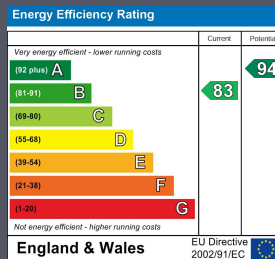
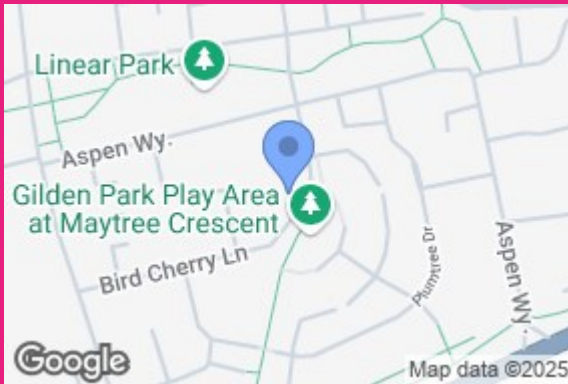
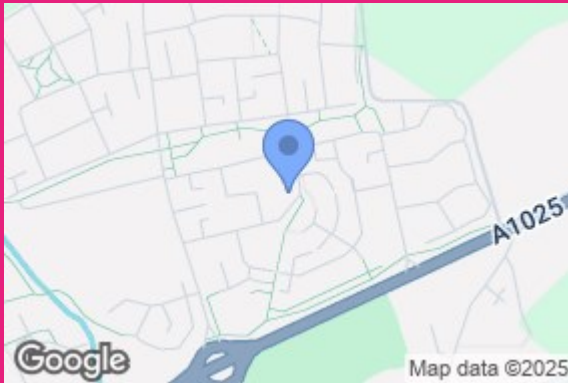
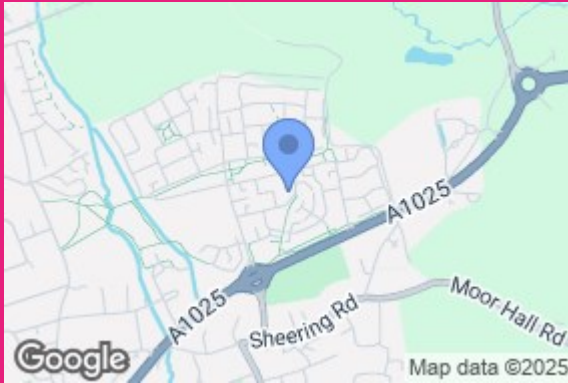
Private low maintenance rear garden offering patio, artificial turf and ample entertaining space. Wooden shed and bar to rear.

Access to parking via gate.

### Local Area

Bird Cherry Lane is situated in the popular new development of Gildea Park and is located close to local amenities, schooling, Harlow Mill Train Station and the new M11 7A Junction.





Equity House  
 4-6 Market Street  
 Harlow  
 Essex  
 CM17 0AH  
 01279 400444  
 hello@clarknewman.co.uk